



# Water Vole Excluder Fitting Instructions

A water vole excluder is a simple optional extra that can be fitted to mink rafts when lots of by-catches, such as water voles or birds get caught often. The more successful we are the more by-catches we will get, meaning more visits to release them. There is still a small chance of getting by-catches but the excluders will reduce them significantly, mink are not put off by the excluder and will still enter the trap by going over top.

## The water vole excluder

The excluder comes in three parts that simply slots together (as shown below), and is then fixed to the side of the tunnel with cable ties.



**Step 1.** Put the three parts together and place at the trap door end of the mink raft.



**Step 2.** The corner cut out goes around the cable tie that holds the tunnel wedge in place, align the cutout with the wedge as shown below.



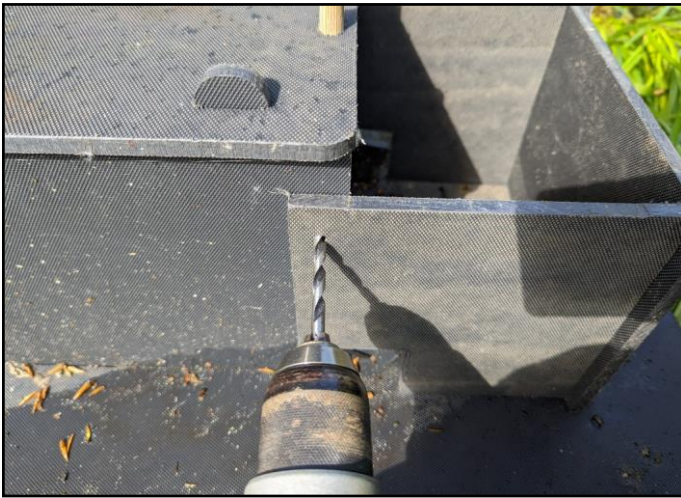




# Water Vole Excluder Fitting Instructions

---

**Step 3.** Hold the excluder in place, and apply downward pressure to make sure the excluder is flat with the base of the mink raft. using a 5mm drill bit, drill through the side of the tunnel where all the holes are. If your excluders does not have cable tie fixing holes they can be added, which are spaced around 8 cm apart.



**Step 4.** From the inside of the tunnel, thread a cable tie through the bottom hole and back through at the top and tighten. The cable tie size is 4.7mm x 300 or 370.



**Step 5.** Trim both the the cable ties



**Step 6.** Finished, the excluder is now fitted to the mink raft.

